



**Australian Government**  

---

**Bureau of Meteorology**

# Alternative Observational Data

Robin Hicks

May 2013, Busselton

# World Meteorological Organisation Commission of Climatology

- **The Best Way to Predict the Future is to Create It**
  - **1. The digital revolution will continue**, making telecommunications less expensive and more widespread. In climatology this will likely mean more automated weather stations.
    - China plans to have 100,000 automatic rain gauges in operation by the end of this year.

# Trends in observations

- **2. Increasing partnerships.** Meteorological Services are increasingly seeing that they cannot do everything their citizens need, nor do they have to. Of the 100,000 automatic rain gauges in China CMA will operate 50,000 and the Ministry of Water Resources will run the other 50,000.
- **3. Increasing openness of data.** More and more NMHSs are realizing that data only have value if people use them and the more useful the data are perceived to be the easier it is to get support for making the necessary observations.

# Trends in observations

- **4. Increasing diversity of data and tools.** primarily focus on in situ data but increasing reliance on a comprehensive spectrum of tools such as climate models, reanalyses, and remote sensing platforms
- **5. Increasing citizen scientist participation.** Volunteer networks and data archivers, data available on websites
- **6. Increasing visibility and appreciation of climate information.**



- **7. Increasing demand for tailored information.** There is an increasing realization that the agricultural sector, for example, has different climate information needs than the health sector.
- **8. Increasing need for near real-time climate information.**

# Other Observations Programs

- US NWS Cooperative Observer Program
- <http://www.nws.noaa.gov/om/coop/standard.htm>
- UK <http://wow.metoffice.gov.uk/support/general>
- <http://wow.metoffice.gov.uk/weather/view?reportId=7349002&siteID=426294>

# Bureau of Meteorology policies

- Develop formal relationships with network owners
  - Metadata, standards, IP ownership
- Volunteer observers. Bureau WOW development project
  - Plans for a separate Australian WOW web interface.
- Portable AWS –
  - - Bureau message format



'THE STEAMING BEAN'

Good Coffee?  
THE STEAMING BEAN  
0220 675 629  
See Website for more info

N558K

'THE STEAMING BEAN'  
good taste remains eternal

Coffee



Home

Sites

Enter Observations

Photo Gallery

Support

Nannup (426294)



View Observation

Table View

Graph View

Site Information

## Observation

Group	Measurement	Observation
<b>Detailed local weather at time of observation</b>	Report Date / Time	09/05/2013 02:30
	Air Temperature	14.9 °C
<b>Rain</b>	Rainfall Accumulation	0.0 mm
	Rainfall Rate	0.0 mm/hr
<b>Other measurements at time of observation</b>	Mean Sea-Level Pressure	1005.6 hPa
	Relative Humidity	78.0 %
	Dew Point	11.1 °C

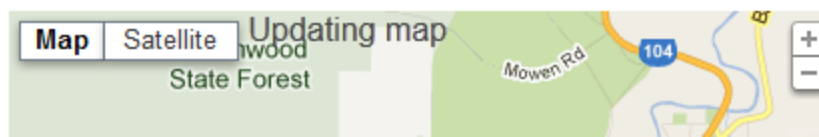
## Wind dials

Wind Speed (mph)



## Observation Location

The location this observation was recorded at is -33.985431, 115.740666.





**Australian Government**  

---

**Bureau of Meteorology**

# Thank you...

Presenter's name

Presenter's phone number

email@bom.gov.au



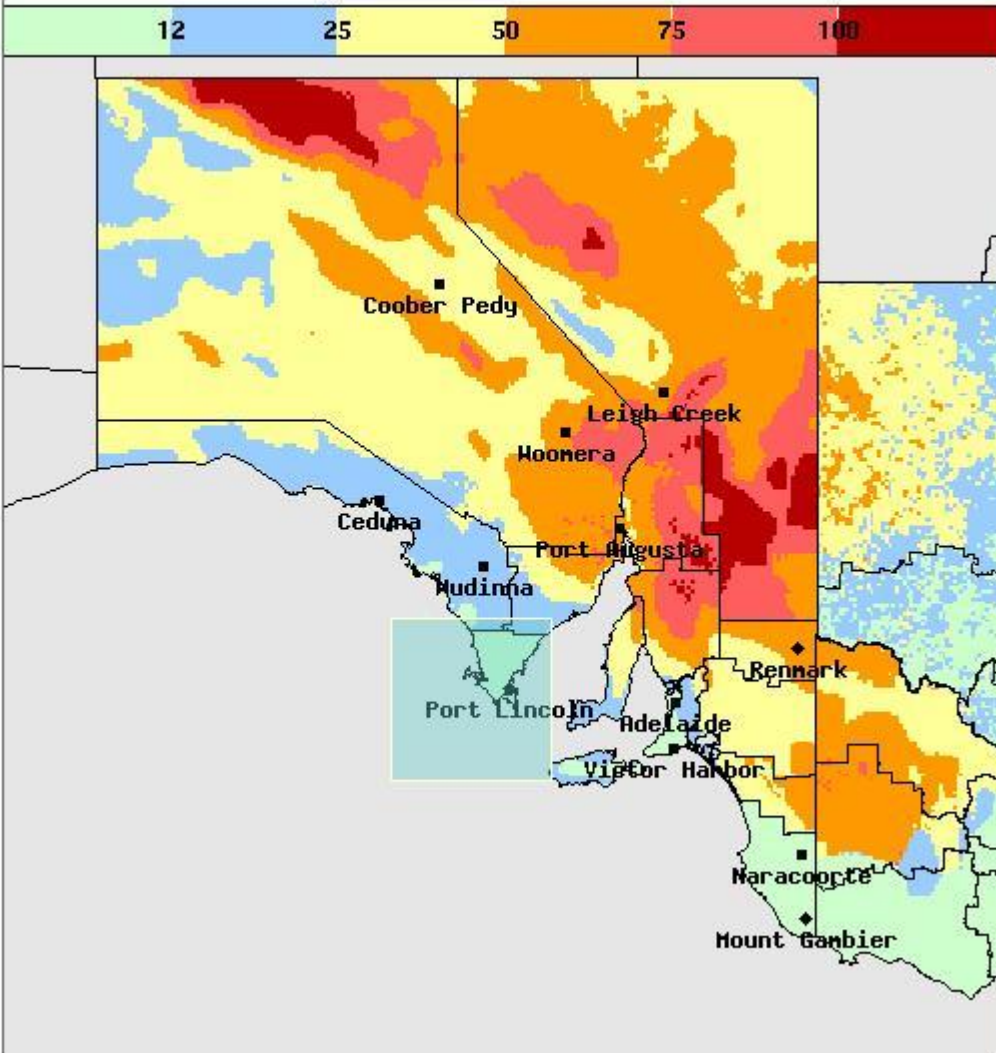
Australian Government

Bureau of Meteorology

South Australia...

Fire View

Maximum Grass Fire Danger for 10 am Tue Nov 29 2011 CDT





Australian Government  
Bureau of Meteorology

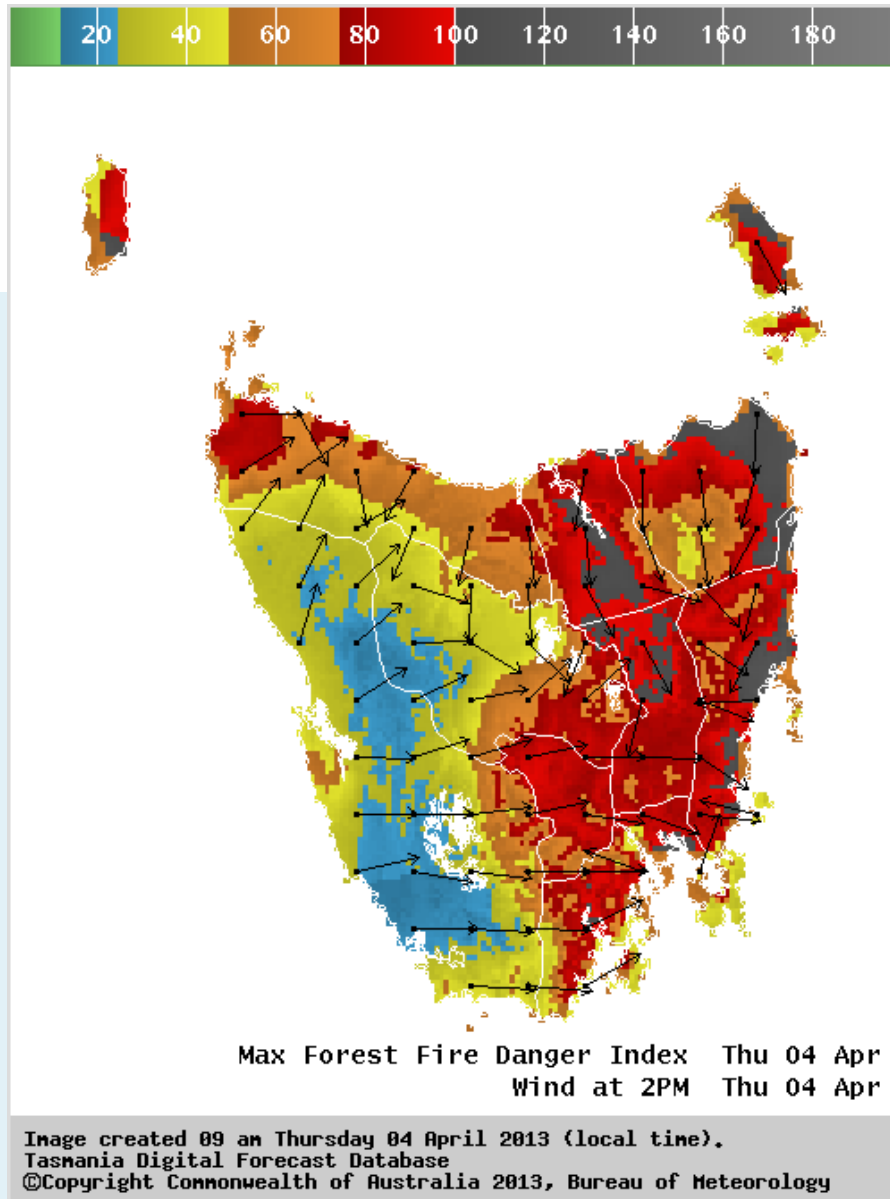


Image created 09 on Thursday 04 April 2013 (local time).  
Tasmania Digital Forecast Database  
©Copyright Commonwealth of Australia 2013, Bureau of Meteorology

# TC Rusty

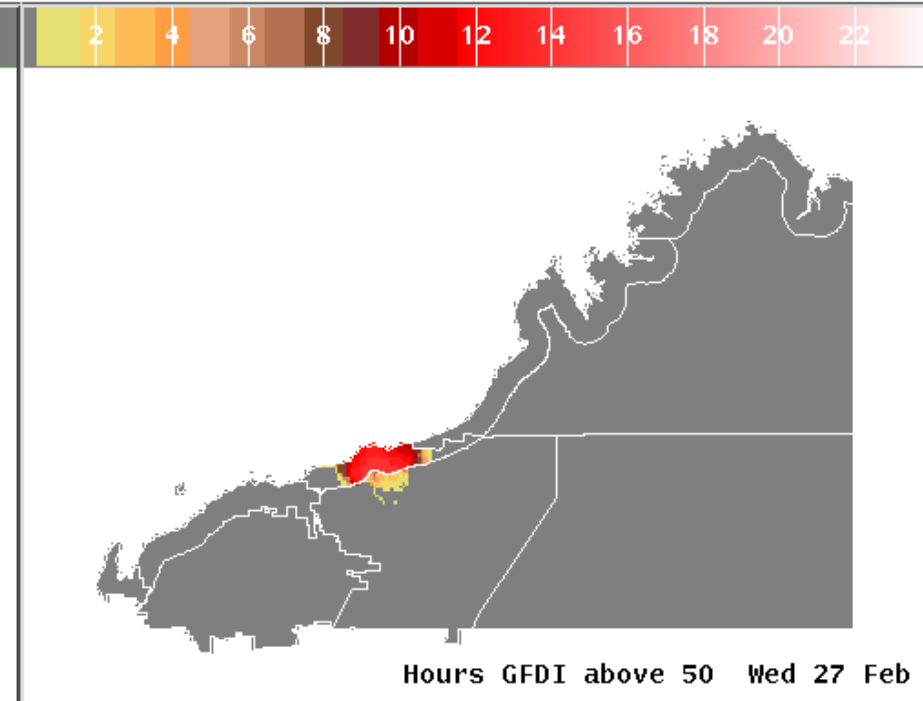
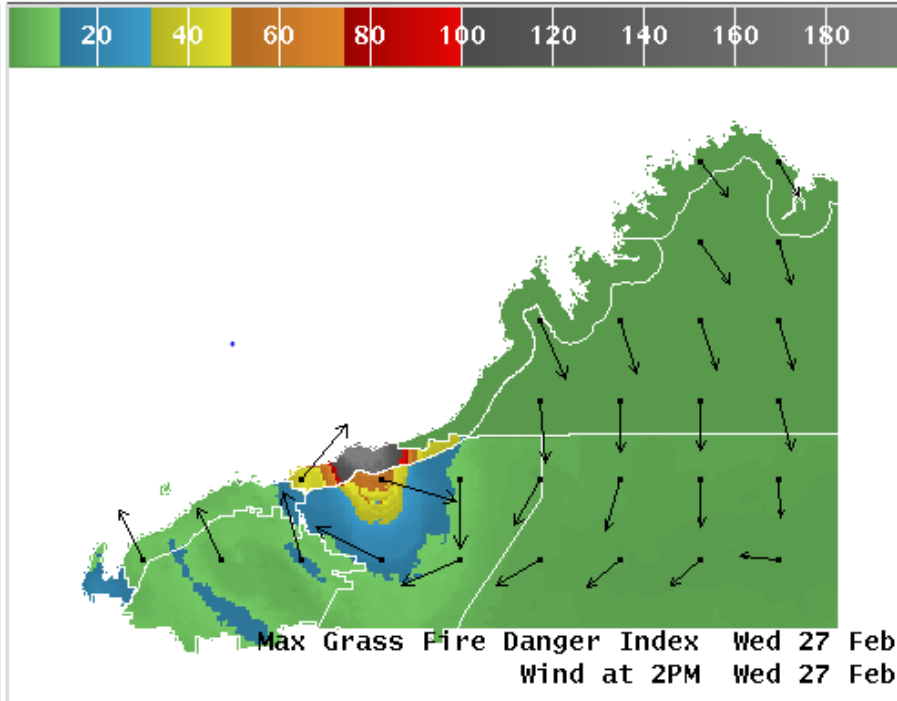


Image created 04 on Monday 25 February 2013 (local time).  
Western Australia Digital Forecast Database  
©Copyright Commonwealth of Australia 2013, Bureau of Meteorology

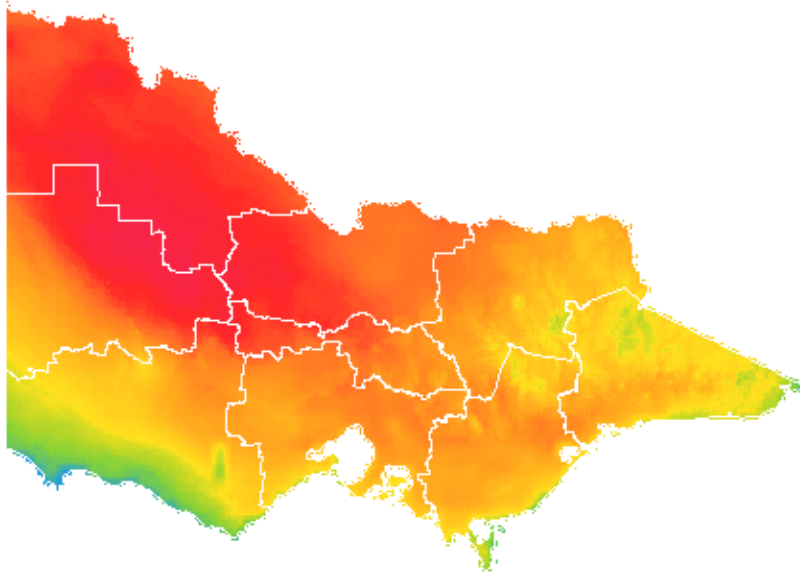
Image created 04 on Monday 25 February 2013 (local time).  
Western Australia Digital Forecast Database  
©Copyright Commonwealth of Australia 2013, Bureau of Meteorology



Australian Government

## Maximum Fire Danger Index Maps

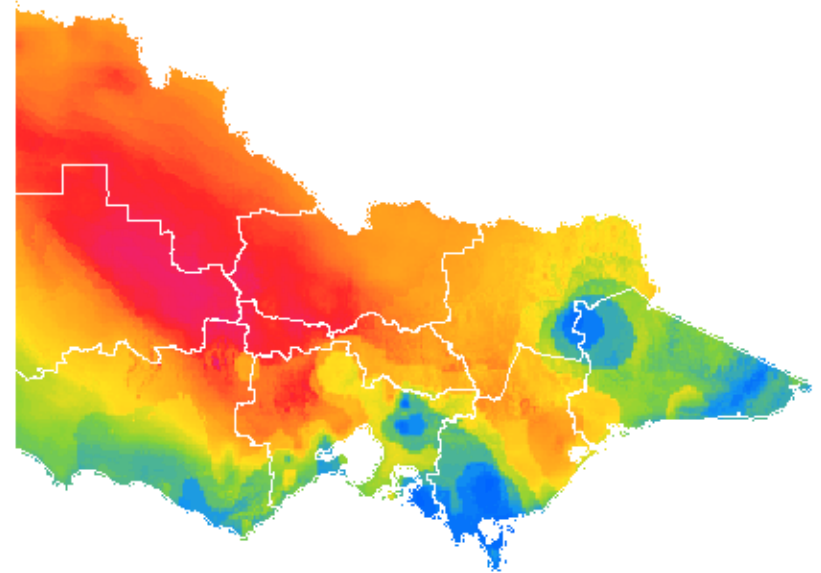
20 40 60 80 100 120 140 160 180



Max Forest Fire Danger Index Fri 11 Jan

Image created 02 on Friday 11 January 2013 (local time).  
Victoria Digital Forecast Database  
©Copyright Commonwealth of Australia 2013, Bureau of Meteorology

20 40 60 80 100 120 140 160 180



Max Grass Fire Danger Index Fri 11 Jan

Image created 02 on Friday 11 January 2013 (local time).  
Victoria Digital Forecast Database  
©Copyright Commonwealth of Australia 2013, Bureau of Meteorology

