

North Australia Bushfire Assessment Workshop

Queensland Outlook

Kununurra
15-16 June 2011

Ian Thomas
Fergus Adrian

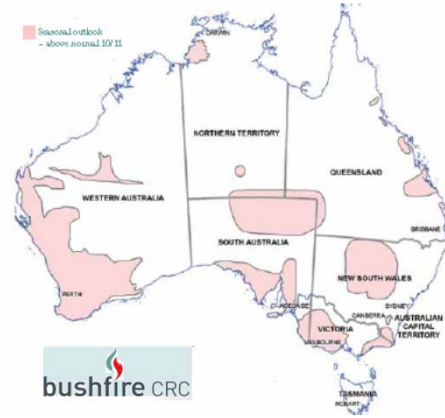


Queenslander

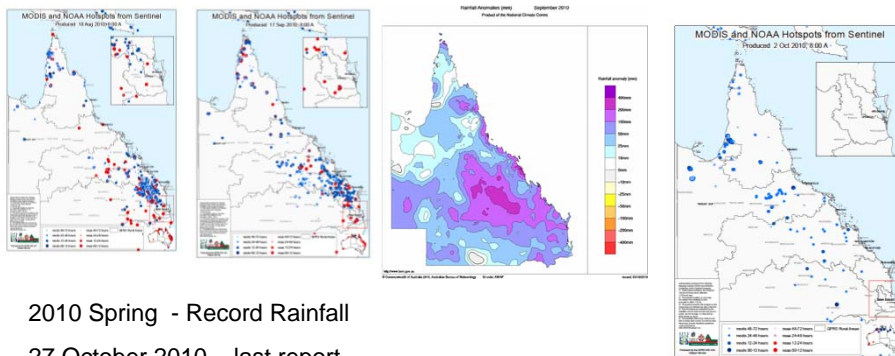
- 2010 Bushfire Season Potential
- Season fire activity 2010
- Seasonal conditions 2010 to May 2011
- 2011 Bushfire Season Assessment Outlook



2010 Bushfire Potential



2010 Fire Activity



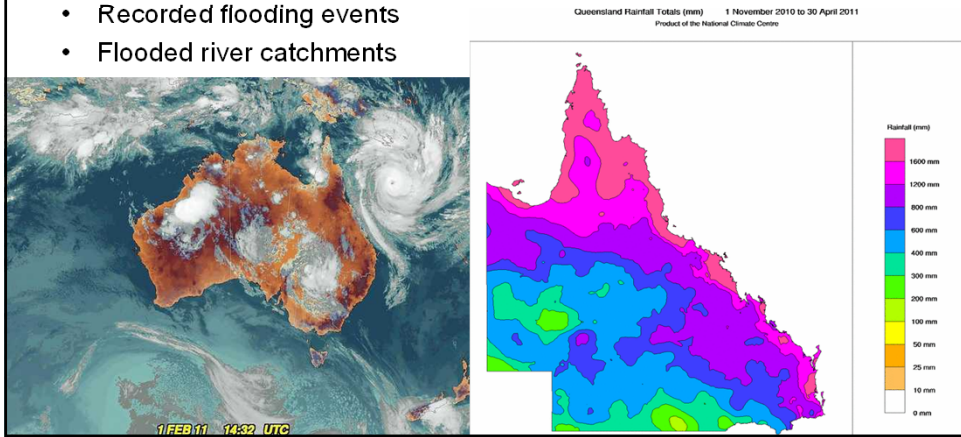
2010 Spring - Record Rainfall
27 October 2010 – last report



Weather

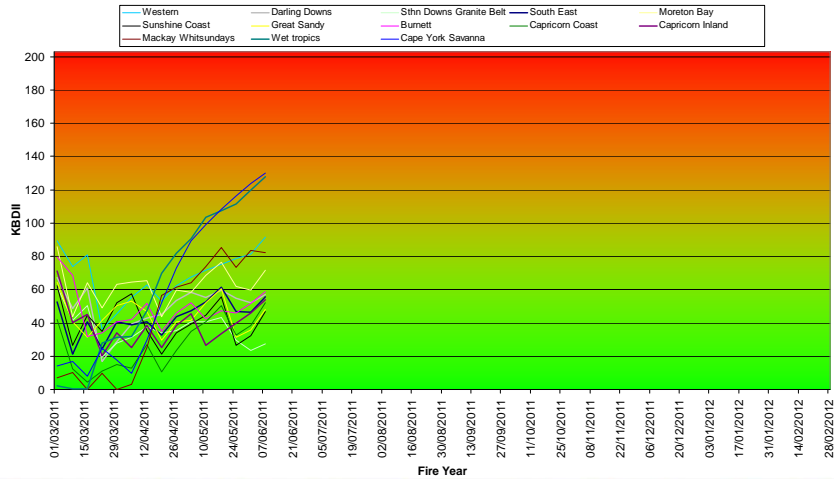
November 2010 to May 2011

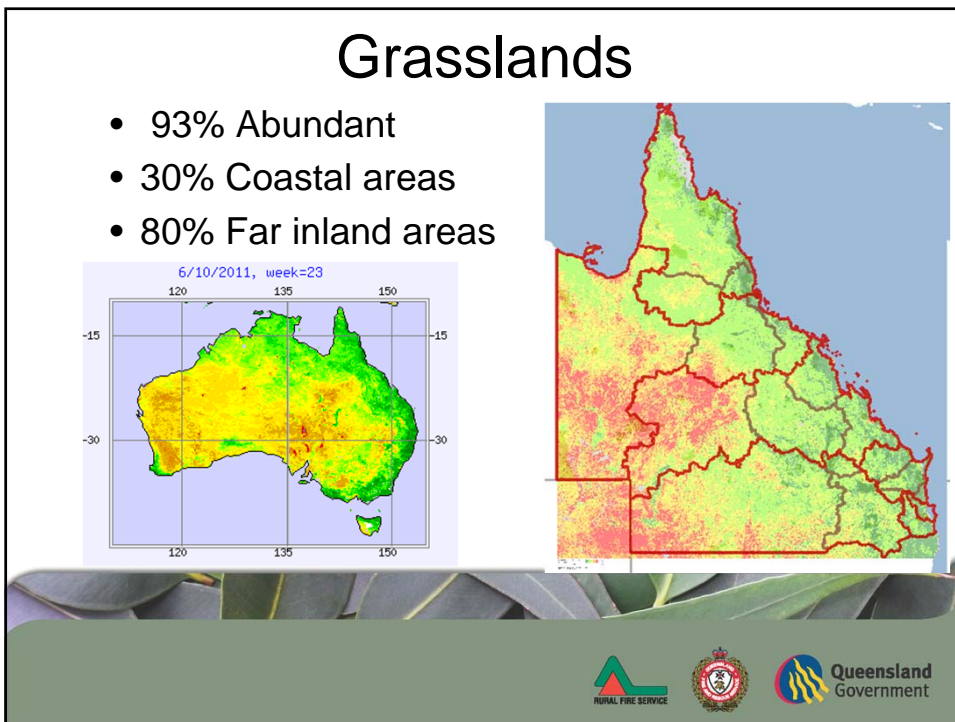
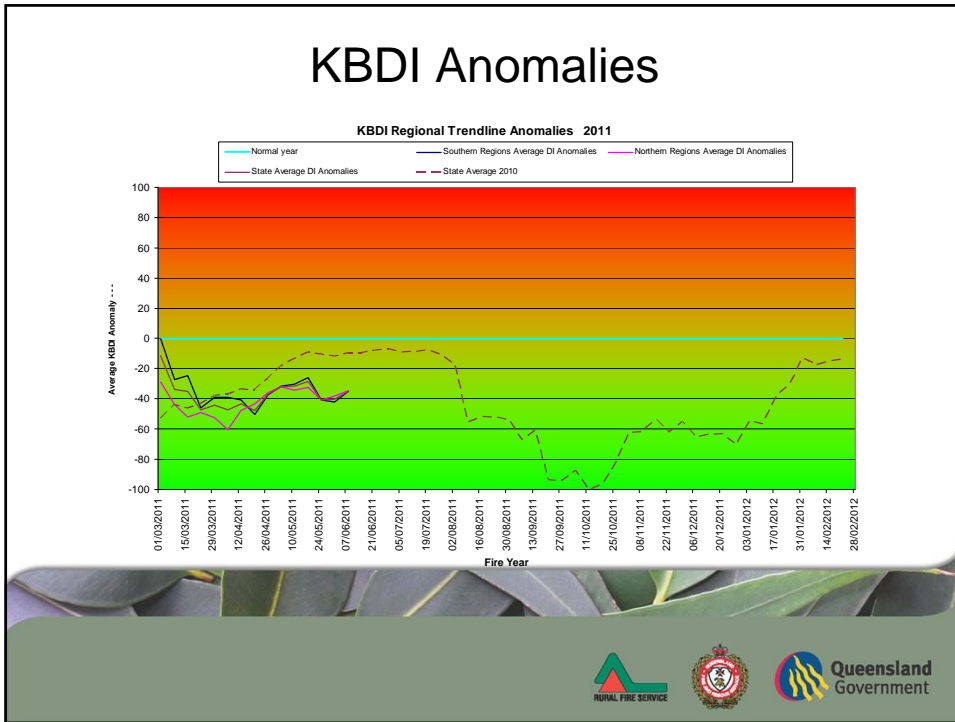
- 2010 Spring
- Wettest on Record
- Monsoon effects into Sthn Qld
- TC Tasha, Andrew and Yasi
- Recorded flooding events
- Flooded river catchments

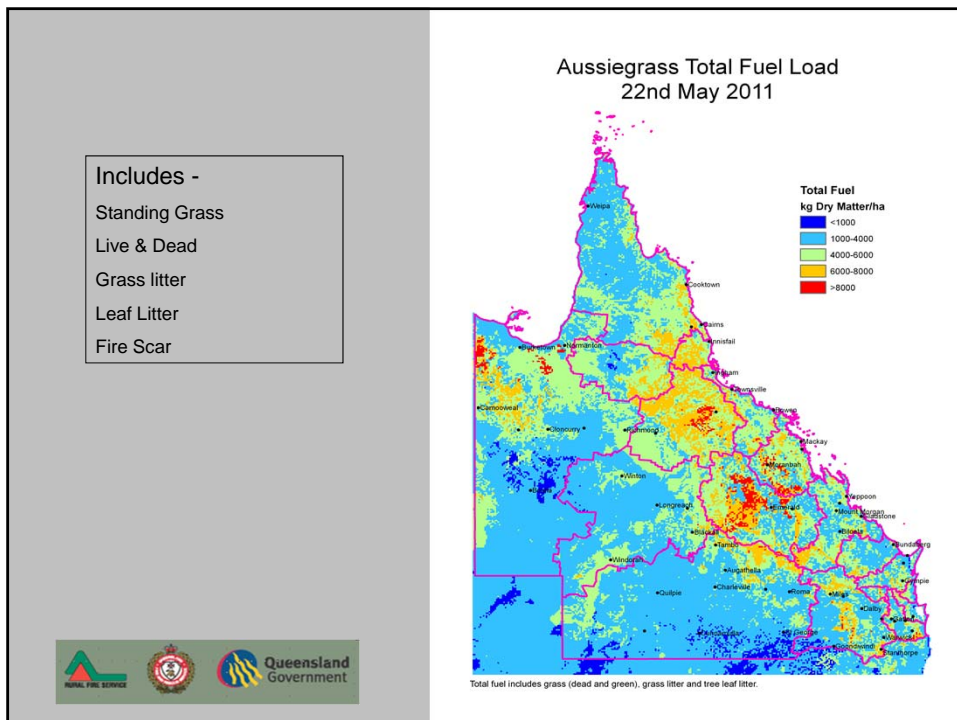
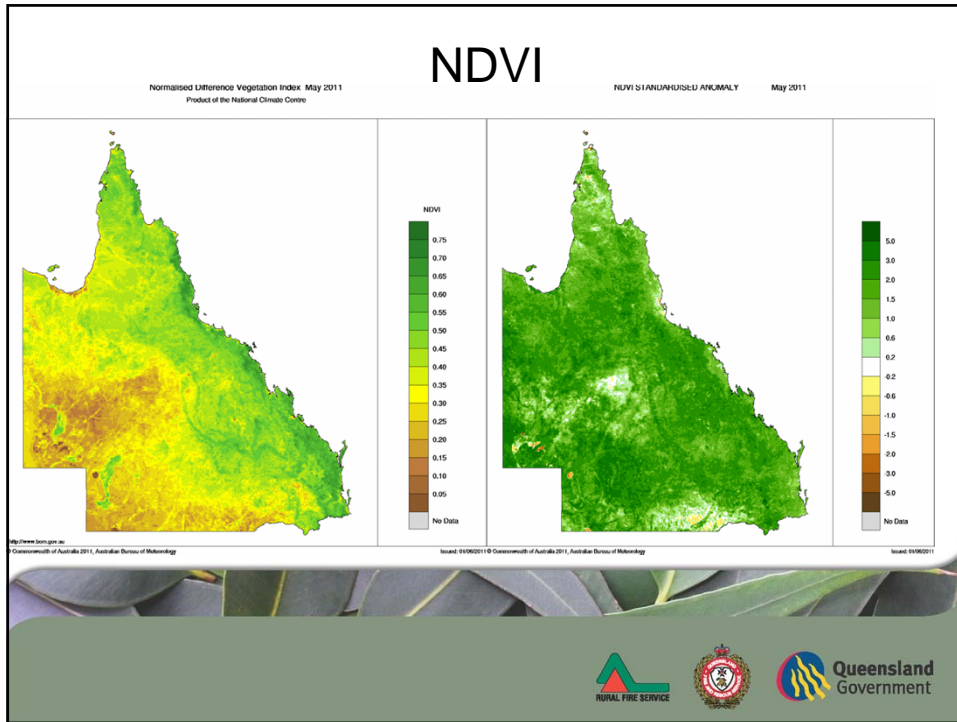


Soil Moisture

KBDI Regional Trendlines 2011





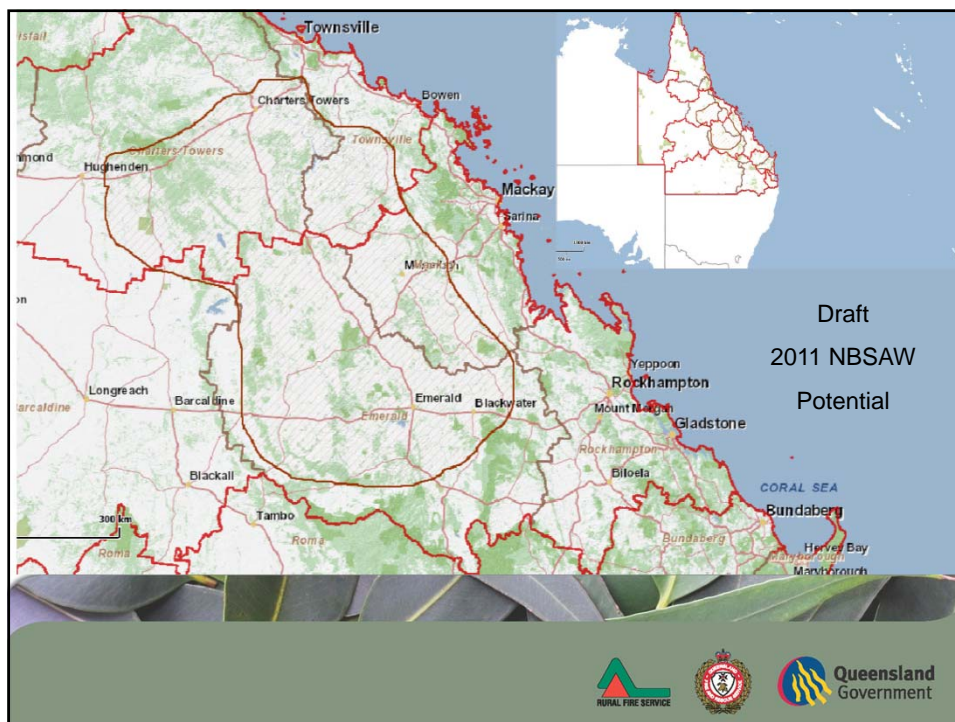


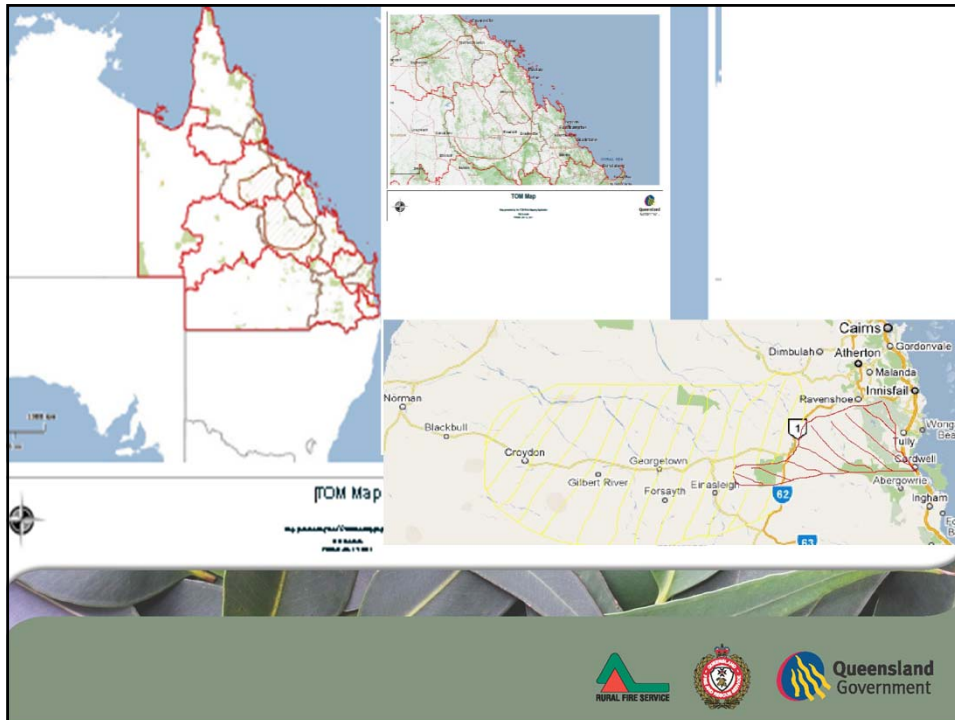
Climate Outlook (Queensland)

- ENSO – Neutral
- Median rainfall
- Average daytime temps
- Cooler nights – frosts
- Depend on dry southerly – s/westerly synoptic winds

Fire Season

- Normal/delayed fire season commencement
- Duration ???





Summary

- Continuous horizontal arrangement of above average fuels over most of North Queensland. Moisture continues to contribute to a reduced fire risk.
- Winter frosts and dry southerly and south westerly winds are affecting fuel conditions while curing values are increasing in inland grassland areas..
- Weather conditions over the next 3 month, in combination with the changing fuel conditions in grassland and forests will determine the commencement and potential severity of the 2011 fire season.
- The current high level fuel and soil moisture makes fuel reduction burning restrictive in many areas.



Thankyou
Questions

